

Katz EyeSM Optics

Focusing Screen Installation Instructions

For the Sigma SD9/SD10

Katz Eye™ Focusing Screen Installation Instructions

For the Sigma SD9/SD10

Thank you very much for your purchase of a Katz Eye™ focusing screen. This document provides installation instructions for the Sigma SD9/SD10. Please note: As part of the installation procedure, the focusing screen retaining clip will be modified to properly secure the Katz Eye™ screen. After this modification, it may not be possible to reinstall the original Sigma focusing screen without replacing the retaining clip.

WARNING: THESE INSTRUCTION ARE PROVIDED "AS IS" WITHOUT WARRANTY OF ANY KIND, EITHER EXPRESSED OR IMPLIED, INCLUDING, BUT NOT LIMITED TO THE IMPLIED WARRANTIES OF MERCHANTABILITY AND FITNESS FOR A PARTICULAR PURPOSE. KATZ EYE™ OPTICS ACCEPTS NO LIABILITY FOR DAMAGE RESULTING FROM USING THESE INSTRUCTIONS. SHOULD DAMAGE OCCUR AS A RESULT OF FOLLOWING THESE INSTRUCTIONS, THE USER WILL ASSUME THE ENTIRE COST OF ALL NECESSARY SERVICING, REPAIR OR CORRECTION. KATZ EYE™ OPTICS' LIABILITY IS LIMITED TO REPAIR OR REPLACEMENT OF PARTS SUPPLIED BY KATZ EYE™ OPTICS.

Note: Some pictures are available in larger format on the internet. Just click the links.

1. Set up a work area which is relatively free of dust and has a soft surface on which to place the camera.
2. Collect the necessary tools and supplies. You will need:
 - a. Miniature Phillips head screwdriver.
 - b. Miniature flat head screwdriver.
 - c. Tweezers.
 - d. Bulb blower.
 - e. Small pliers.
 - f. Pec-Pads or lens cloth.



Click Photo to Enlarge

3. Remove the lens from the camera and place the camera flat on its back (on the LCD side).
4. Remove the screw (indicated by red arrow) which retains the dust shield and lift out the dust shield. Place the shield on a Pec-Pad or lens cloth.



5. Locate the two notches in the frame which allow access to the focusing screen retaining clip (marked by red arrows).



[Click Photo to Enlarge](#)

6. Using a miniature flat head screwdriver, gently push front edge of the retainer clip towards the back of the camera, and when it clears the center catch area, gently nudge it towards the bottom of the camera and it will be free.



[Click Photo to Enlarge](#)



[Click Photo to Enlarge](#)

7. Lift out the clip with a tweezers.



[Click Photo to Enlarge](#)

8. Place a folded Pec-Pad or lens cloth against the mirror and allow the focusing screen to fall against the pad. Carefully lift out the focusing screen with a tweezers, being sure to grab only the tab so as not to scratch the face of the screen.

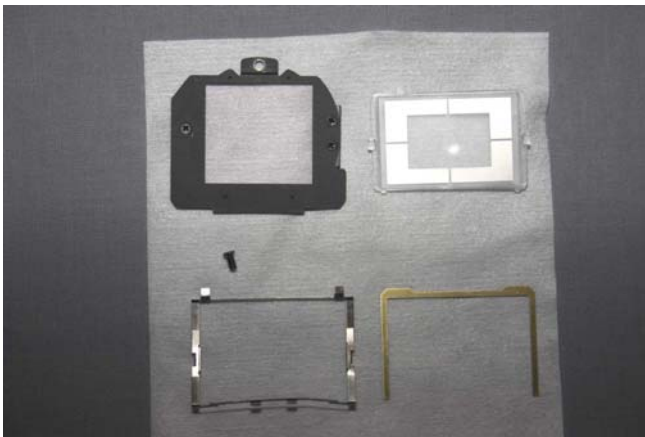


Click Photo to Enlarge



Click Photo to Enlarge

9. The horseshoe-shaped brass shim need not be removed. However, it is shown here with all the focusing screen parts for reference. If the shim becomes dislodged, be sure it is fully seated in the frame and does not have the end caught in the retainer clip notch as shown in this picture. The shim should lie totally flat when correctly installed. Again, it is not necessary to remove the shim to install the Katz Eye™ focusing screen. The correct focus calibration will be obtained with the shim in place.

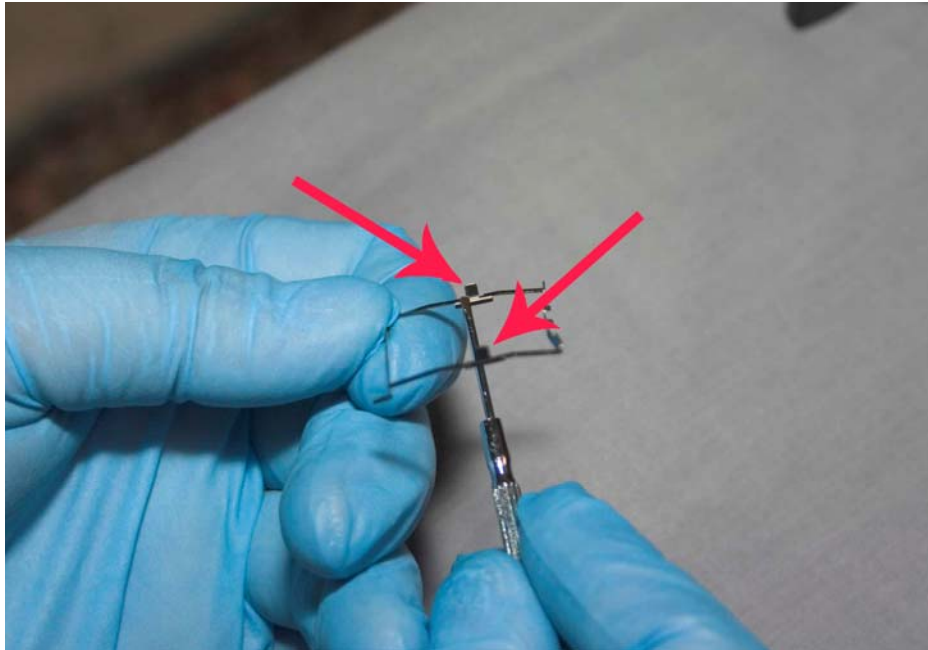


Click Photo to Enlarge

10. Place a body cap on the camera and set the camera aside until the focusing screen retainer clip modification is complete.

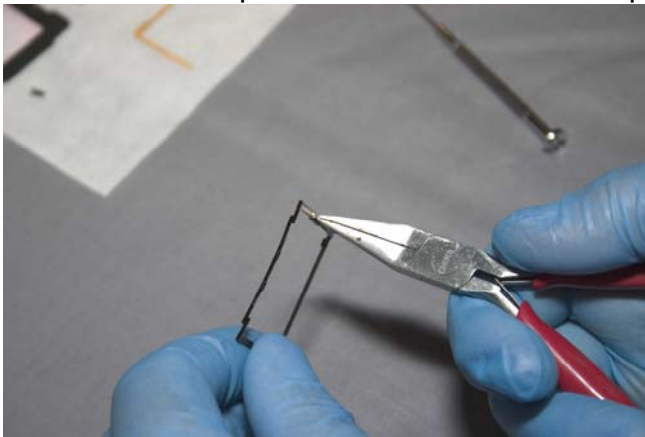
- Please proceed to next page -

11. Locate the two tabs on the focusing screen retainer clip indicated by the red arrows.

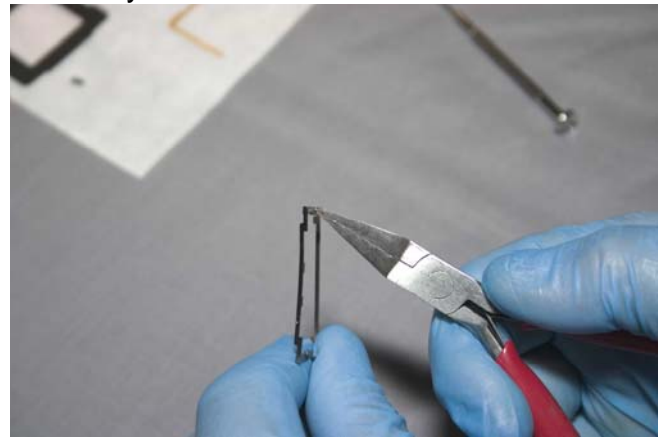


[Click Photo to Enlarge](#)

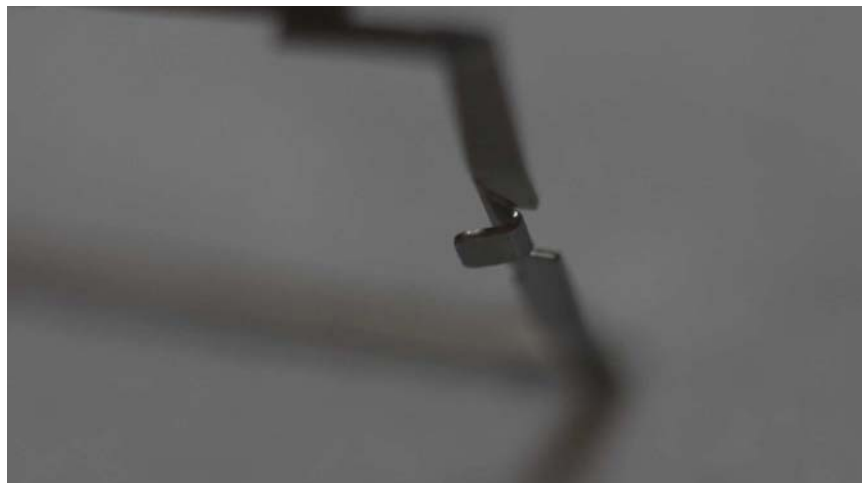
12. Grasp one of the tabs with the pliers and bend the tab approximately 60°, so that it looks like the picture below. Be sure to leave the tab at a slight angle (approximately 30°), as shown in the picture. Do not bend the clip all the way flat.



[Click Photo to Enlarge](#)

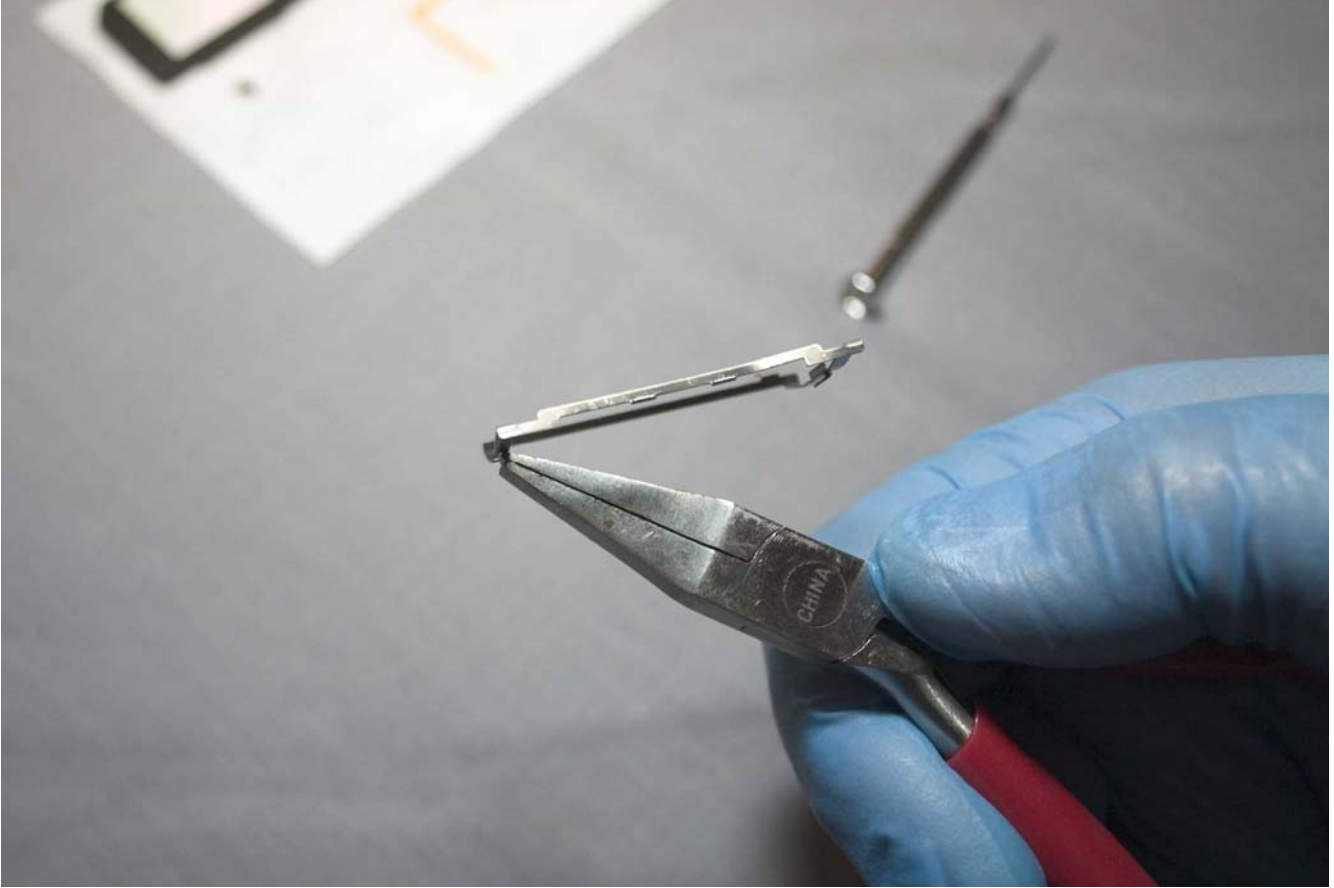


[Click Photo to Enlarge](#)



[Click Photo to Enlarge](#)

13. Repeat the bending process for the other tab.



[Click Photo to Enlarge](#)

14. Once the clip has been modified, the camera may be reassembled. Remove the body cap from the camera and be sure the brass shim is fully seated in the frame. Blow out any dust from the viewfinder area with the bulb blower. If the air dislodges the shim, be sure to properly re-seat it.

15. Install the new Katz Eye™ focusing screen by grasping the tab with a tweezers and inserting it into the camera. The matte (frosted) side of the screen, which has the lines engraved on it and the groove machined around the edge, should face the shim. Make sure the focusing screen is sitting flat and the tabs on the bottom fit into their recesses (not the large slots for the retainer clip).



[Click Photo to Enlarge](#)



[Click Photo to Enlarge](#)

Insert the focusing screen retainer clip with the tweezers. Be sure the two bottom tabs fit into the notches in the camera.



[Click Photo to Enlarge](#)

17. Carefully press the focusing screen retainer clip back into place. Use care not to damage the foam strip in the center.



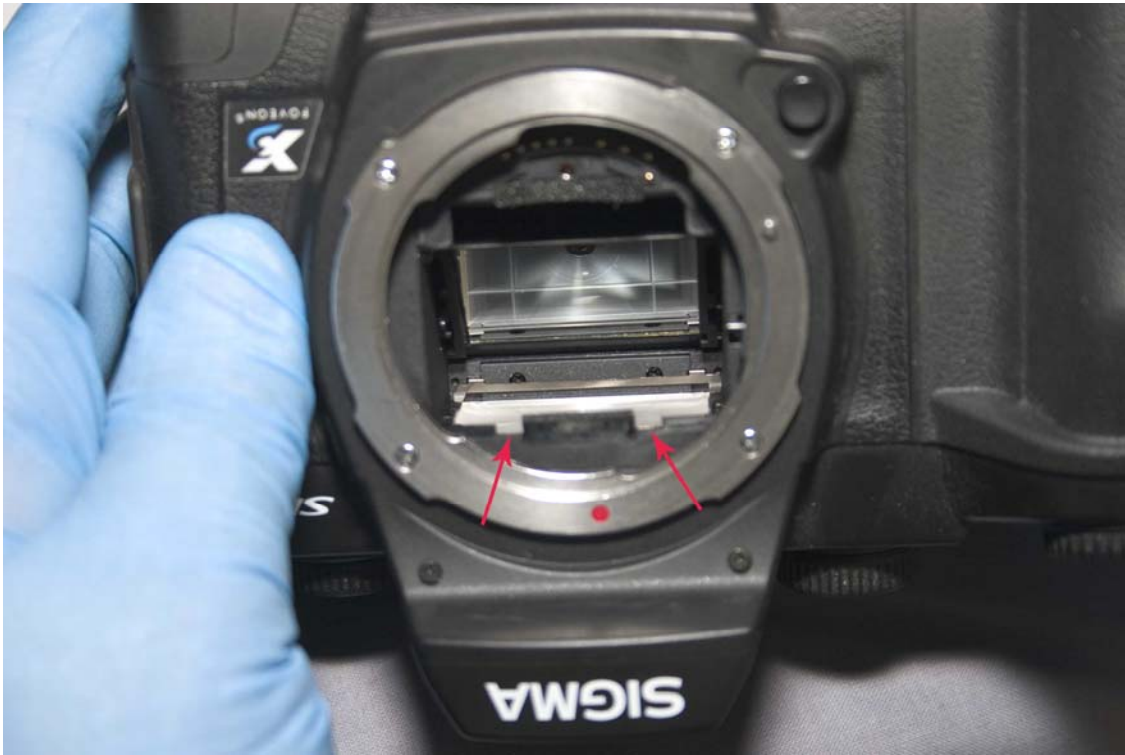
[Click Photo to Enlarge](#)



[Click Photo to Enlarge](#)

- Please proceed to next page -

18. Check to be sure that the focusing screen retainer clip is fully secured. When it is completely latched, it will just barely be visible at the two notches indicated by the arrows in the picture below. (This picture also provides a very clear view of the two bottom tabs on the retainer clip and the notches they fit into.)



Click Photo to Enlarge

19. Blow off the focusing screen and mirror box area with the bulb blower.

20. Reinstall the dust shield and secure it with its Phillips head screw.

21. Reinstall the lens and check the camera functions.

Technical support is available by email to customerservice@keoptics.com. I strive to return all emails within 24 hours. Alternatively, you may call +1 916 361 2143 between the hours of 8:00am and 7:00pm Eastern Standard Time, Monday through Saturday. If I am not available, please leave a brief message, including your name and phone number, and I will call you back within 24 hours.

If you are unable to complete the installation yourself, Katz Eye™ Optics can provide installation services. Please contact us for pricing and availability. I would also be happy to advise your choice of local camera shop regarding the installation procedure. Thank you very much for your purchase of a Katz Eye™ focusing screen and may the world bless you with abundant photo opportunities.

Take care,

Rachael Katz – Owner, Katz Eye™ Optics